

# BRIDGEPORT AND BLACK ROCK HARBORS FEDERAL NAVIGATION PROJECT DRAFT DREDGED MATERIAL MANAGEMENT PLAN (DMMP) & ENVIRONMENTAL ASSESSMENT (EA)

Virtual Public Meeting  
New England District (NAE)  
16 April 2026

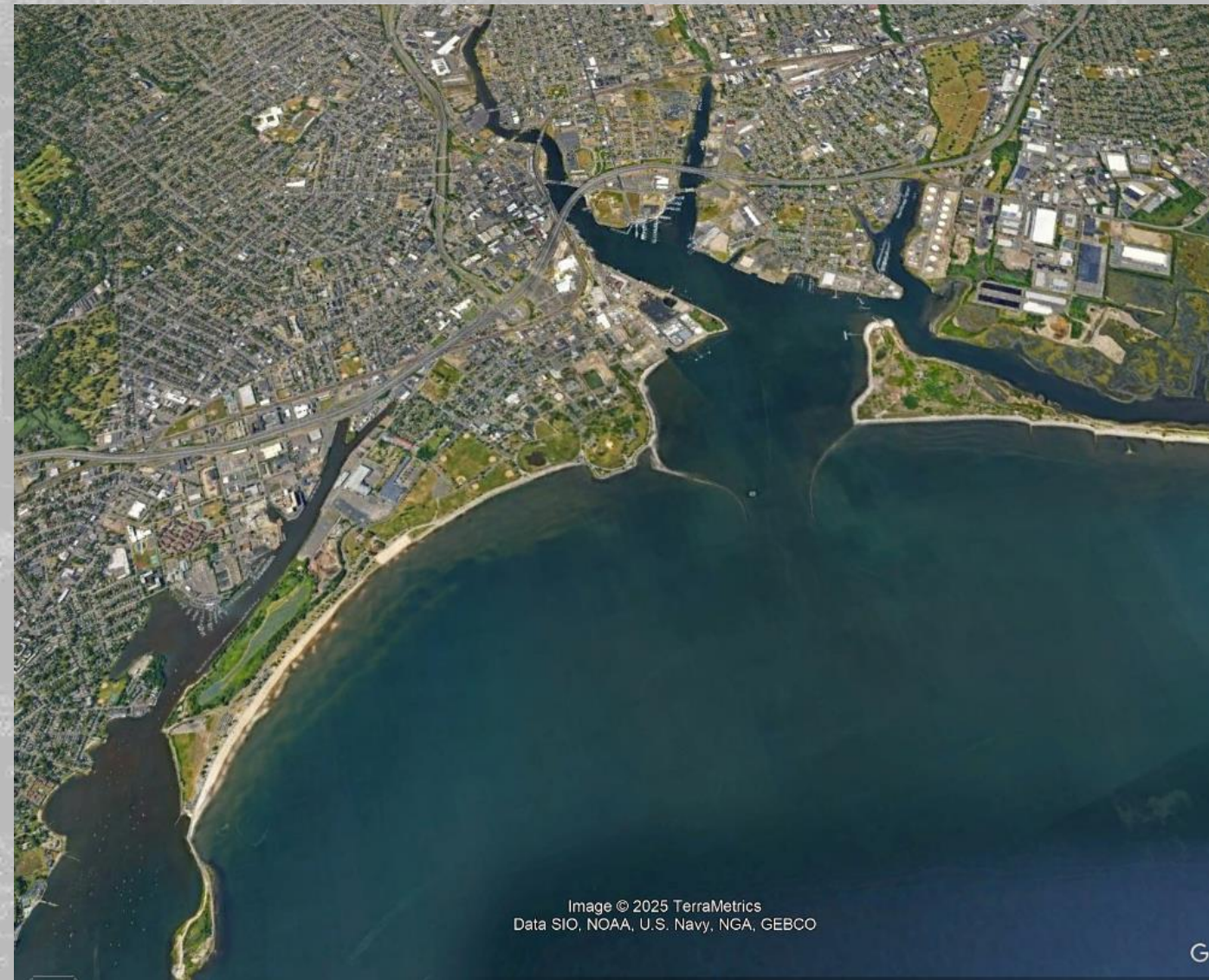


Image © 2025 TerraMetrics  
Data SIO, NOAA, U.S. Navy, NGA, GEBCO



US Army Corps  
of Engineers®



# Bridgeport & Black Rock Harbors Draft DMMP/EA



## AGENDA

- 1 Introductions
- 2 Meeting Purpose
- 3 Draft Report Overview
- 4 Next Steps
- 5 Questions



# Bridgeport & Black Rock Harbors Draft DMMP/EA



## INTRODUCTIONS



# INTRODUCTIONS



**Project Manager:** Sam Bell, CFM  
USACE New England

**Executive Director:** Michael J. O'Connor  
CT Port Authority

**Lead Planner:** Barbara Blumeris  
USACE New England

**Environmental Lead:** Christine San Antonio  
USACE New England



# Bridgeport & Black Rock Harbors Draft DMMP/EA



## MEETING PURPOSE



# Bridgeport & Black Rock Harbors Draft DMMP/EA



## Meeting Purpose

- To provide the Public with an overview of the Bridgeport and Black Rock Harbors Draft DMMP/EA
- To provide the Public with the next steps for the project.
- To hear your questions.



# PROJECT OVERVIEW



# STUDY AUTHORITY

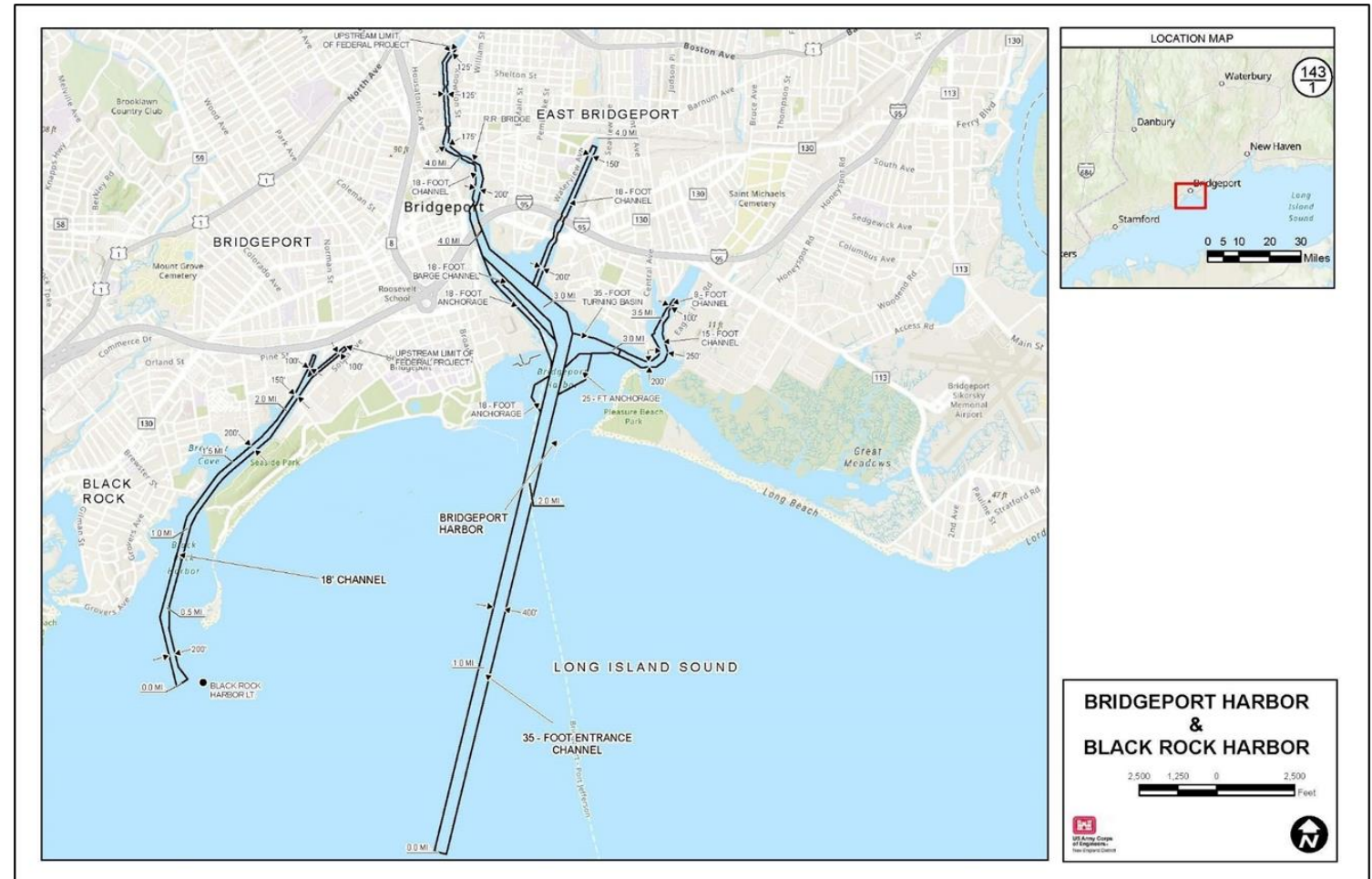
- The Bridgeport Harbor FNP was originally authorized by the Act of 1836. The FNP had then been modified by the Act of 1852, the River & Harbor Acts (RHA) of 1871, 1872, 1875, 1878, 1882, 1888, 1890, 1892, 1894, 1896, 1899, 1907, 1910, 1919, 1930, 1937, 1945, 1946, Public Law (PL) 85-151, RHA 1958, the Act of 2 Nov 1979, Water Resource Development Acts (WRDAs) 1996, 1999, 2007, and PL 115-270. Three (3) partial deauthorizations have been made (WRDA 1997, WRDA 2000, and WRDA 2024).
- The Black Rock Harbor FNP is originally authorized by the Act of 4 July 1836. The FNP had then been modified by the RHAs of 1884, 1894, 1899, 1910, 1919, 1930, 1937, PL 84-151, RHA 1958, and WRDA 1986. There are no deauthorizations at Black Rock Harbor.
- ER1105-2-103 requires DMMPs where there is an indication of insufficient dredged material placement capacity to accommodate maintenance dredging needs for the next 20 years.



# Bridgeport and Black Rock Harbors Draft DMMP/EA



- **Purpose:** To address dredged material placement needs in the Bridgeport and Black Rock Harbors.
- **Need:** Sedimentation has occurred in both FNPs over the last ~40 years, thereby reducing the authorized-project depths several feet.
- The current shoaled condition restricts the size of vessels that shippers can use to bring cargo to the ports, results in tidal delays, and it is possible that deeper draft vessels timing their entrances and exits into the harbor based on tides could ground.





# Bridgeport and Black Rock Harbors Draft DMMP/EA



The Draft DMMP/EA Includes (but is not limited to):

- a plan to manage dredged material for a period of 20 years.
- identifies the Federal Base Plan (the least cost, environmentally acceptable consistent with sound engineering practices plan for management of dredged material).
- considers and evaluate potential beneficial uses of dredged material.
- considers current channel utilization to determine what maintenance dredging depths are warranted for each navigation feature.
- considers and evaluates affected environment and environmental consequences
- provides cost sharing information for the non-Federal sponsor for development of a dredged material disposal facility.



# Bridgeport and Black Rock Harbors Draft DMMP/EA Project Planning

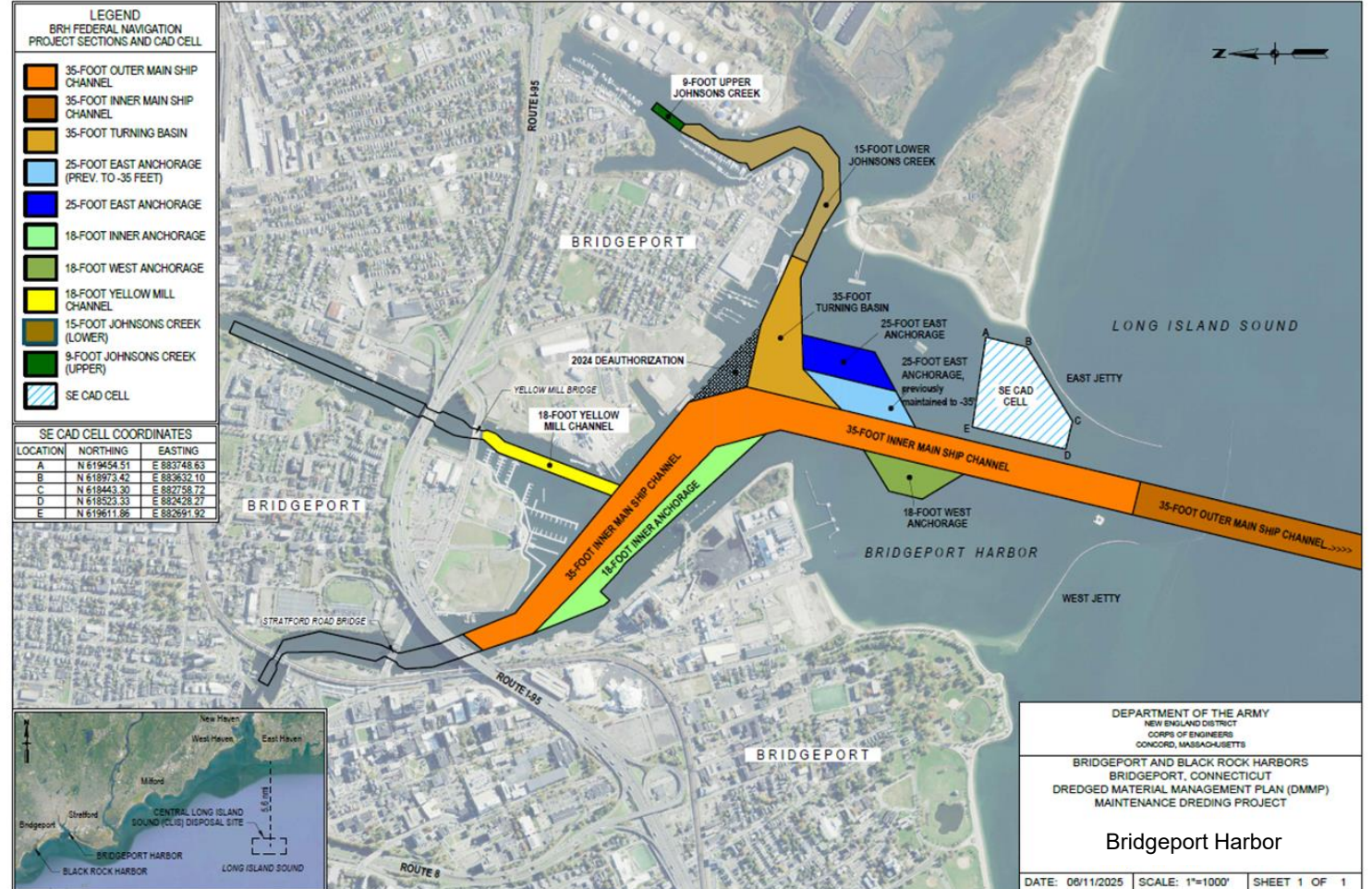


## BRIDGEPORT HARBOR FNP

- Last maintained: 1963

### FNP current dredge volume need:

- Entrance Channel: 863,000 CY (suitable dredged material)
- FNP Inner Harbor: 898,000 CY (unsuitable dredged material)



Note: entrance channel to be dredged extends to deep water, extent to deep water not shown in figure.



# Bridgeport and Black Rock Harbors Draft DMMP/EA

## Project Planning

### BLACK ROCK HARBOR FNP

- Last maintained: 1982/1983

FNP current dredge volume need:

- 581,000 CY (unsuitable dredged material)





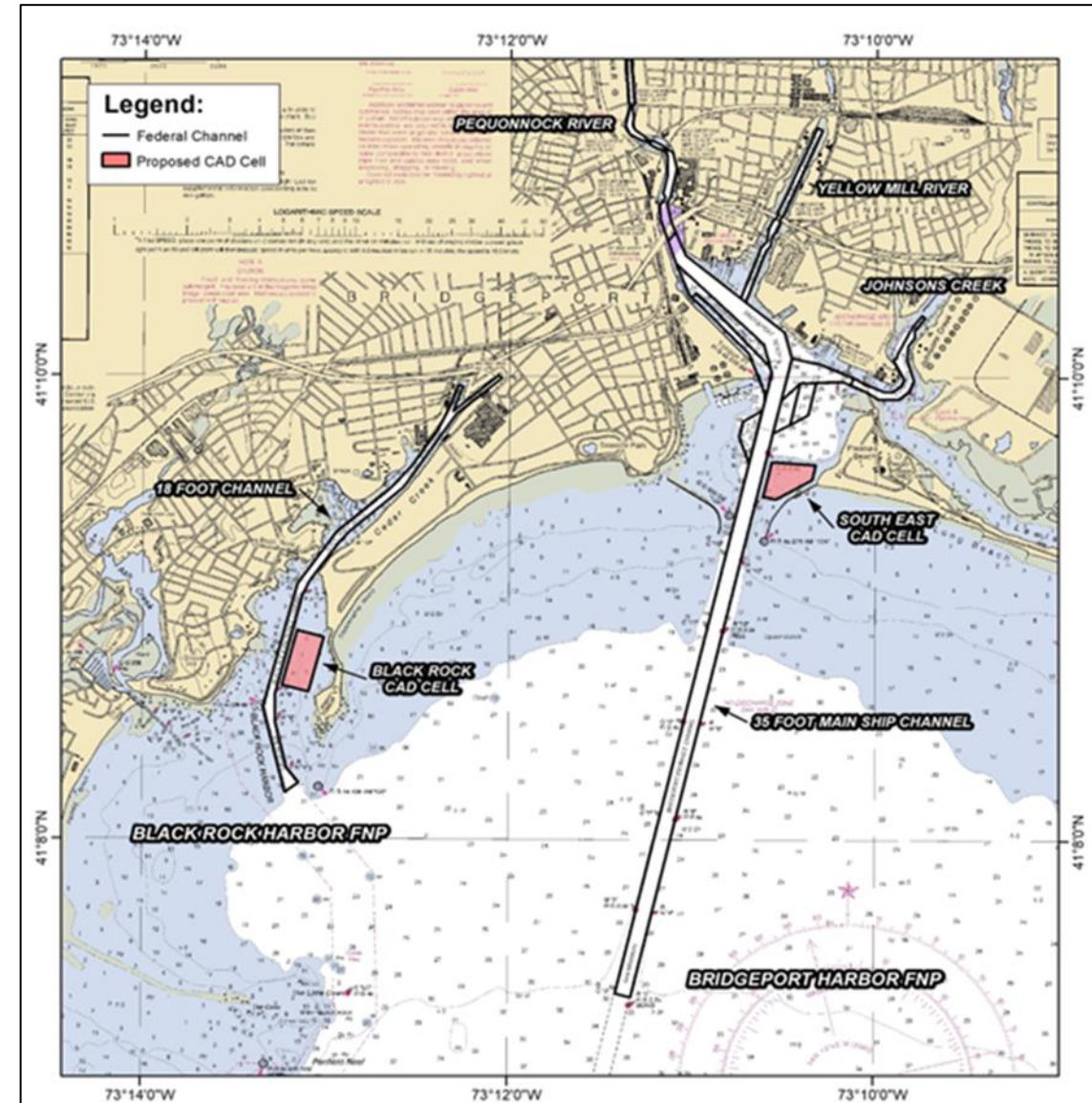
# Bridgeport and Black Rock Harbors Draft DMMP/EA



## Plan Formulation

### Dredged Material Placement Measures Screening

- Evaluated 11 Placement Measures
- 2 CAD Cell Measures for evaluation as a part of the Alternatives Analysis:
  - Bridgeport Southeast CAD Cell
  - Black Rock CAD Cell
- 9 Beneficial Use (BU) Measures as part of Alternatives Analysis





## Quantities

- Two CAD cells proposed for the unsuitable dredged material.
  - 1,976,000 CY SE CAD construction (suitable)
  - 1,655,000 CY (or 1,270,000 CY) Black Rock CAD construction (suitable)
- Bridgeport Harbor: Maintenance Volume
  - 863,000 CY suitable material (from entrance channel)
  - 898,000 CY unsuitable material (inner harbor)
  - 11,000 CY small access channel to CAD Cell
- Black Rock Harbor: Maintenance Volume,
  - 581,000 CY FNP unsuitable
  - 2,000 CY small access channel to CAD Cell



## Plan Formulation – Beneficial Use (BU) Measures

- Identified 9 BU Measures





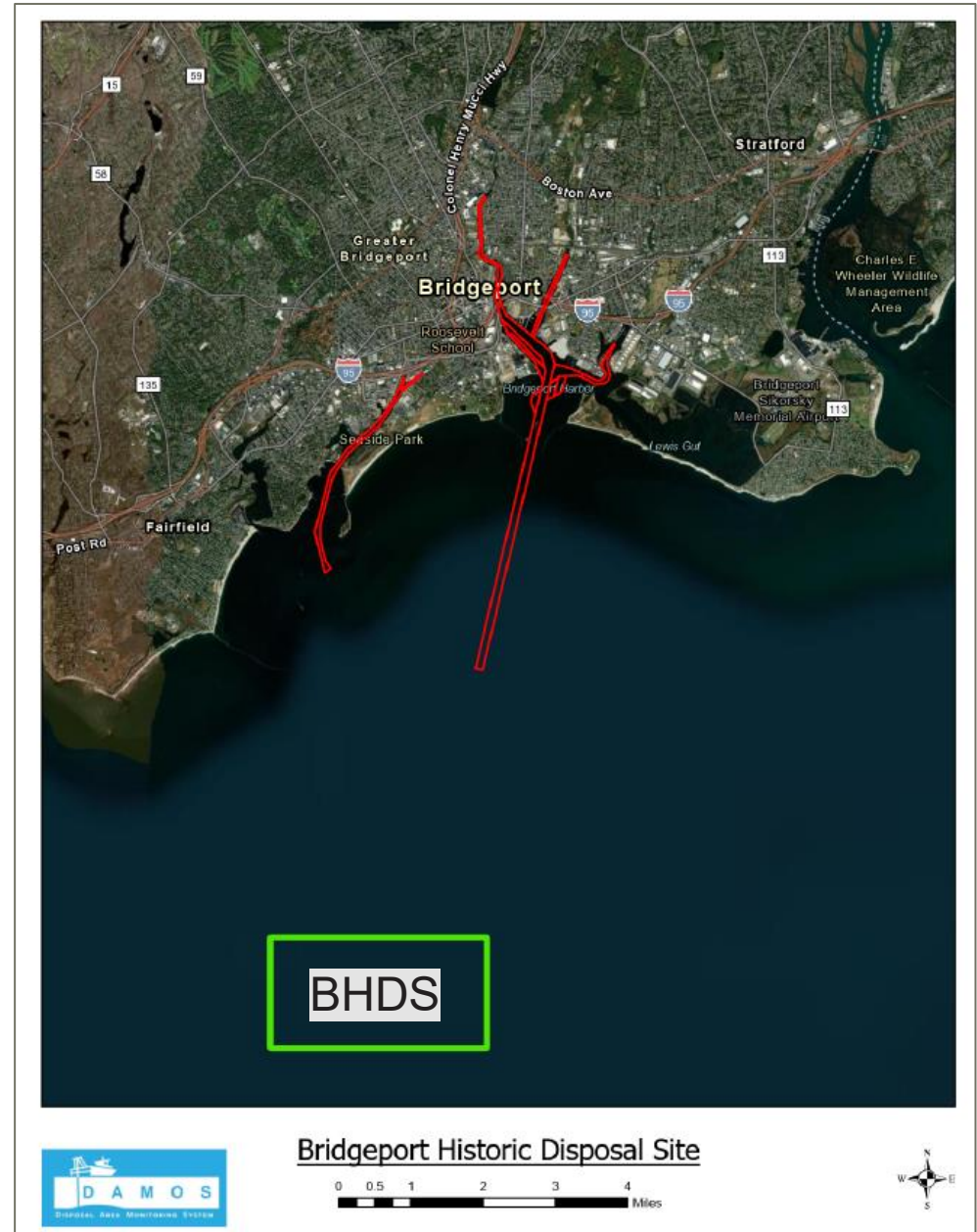
# Bridgeport and Black Rock Harbors Draft DMMP/EA

## Beneficial Use Measure Carried Forward

### BRIDGEPORT HISTORIC DISPOSAL SITE (BHDS)

Placement of Suitable Material at  
BHDS 4,494,000 CY

- Bridgeport SE CAD Cell: 1,976,000 CY
- Black Rock CAD Cell: 1,655,000 CY
- Bridgeport FNP Outer Harbor: 863,000 CY



BHDS



Bridgeport Historic Disposal Site

0 0.5 1 2 3 4 Miles





# Bridgeport and Black Rock Harbors Draft DMMP/EA

## Acceptable and Practicable Alternative

- Evaluated three (3) Alternatives for both Bridgeport and Black Rock FNPs including a “No Action” Alternative
- *Alternative(s) 2 (Southeast CAD Cell with Beneficial Use (BU) and Black Rock CAD Cell with BU)*

Bridgeport and Black Rock FNPs - First Cost* for Alternative Plans to select Federal Base Plan (without local needs)			
FNP	Alternative	Alternative 1	Alternative 2
Bridgeport	No Action	SE CAD – No BU	SE CAD – BU
Black Rock	No Action	Blackrock CAD Cell – No BU	Blackrock CAD Cell – BU



# ENVIRONMENTAL CONSIDERATIONS



# Bridgeport and Black Rock Harbors Draft DMMP/EA

## Environmental Compliance



Activity	Status	Notable Items
<b>National Environmental Policy Act</b>	Impacts to human environment being addressed in integrated Draft DMMP/EA	N/A
<b>Endangered Species Act</b>	Impacts to resources can be avoided. No effect for USFWS species. Not likely to adversely effect NMFS species. Submitted biological assessment for informal consultation with the NMFS.	Time of year (TOY) windows, dredging best management practices
<b>Fish and Wildlife Coordination Act</b>	Avoiding impacts with TOY restrictions for anadromous fish resources, shellfish resources present. Will complete coordination with NMFS during Draft Review.	TOY windows
<b>Magnuson-Stevens Act</b>	Essential Fish Habitat (EFH) for 17 species identified including winter flounder; summer flounder Habitat Areas of Particular Concern; EFH Assessment submitted to NMFS	TOY windows, sequencing; closed mechanical dredging bucket
<b>Clean Water Act</b>	Water Quality Certification pre-application meeting held mid-December 2025; coordinating with CTDEEP a Letter of Support. Coordinated sediment suitability for placement.	N/A
<b>Coastal Zone Management Act</b>	Coordinating with NY DOS and CT DEEP; consistency determinations to be sent in April 2026	N/A
<b>Clean Air Act</b>	Coordinating with EPA and CT DEEP on Clean Air Act analysis; will complete for final draft	N/A
<b>Marine Protection, Research, and Sanctuaries Act</b>	Coordinated with EPA that sediment is suitable for open water placement	N/A
<b>Tribal Coordination</b>	Ongoing coordination with tribes. Will complete during Draft Review.	N/A
<b>National Historic Preservation Act</b>	Ongoing coordination with State Historic Preservation Office. Will complete during Draft Review.	N/A

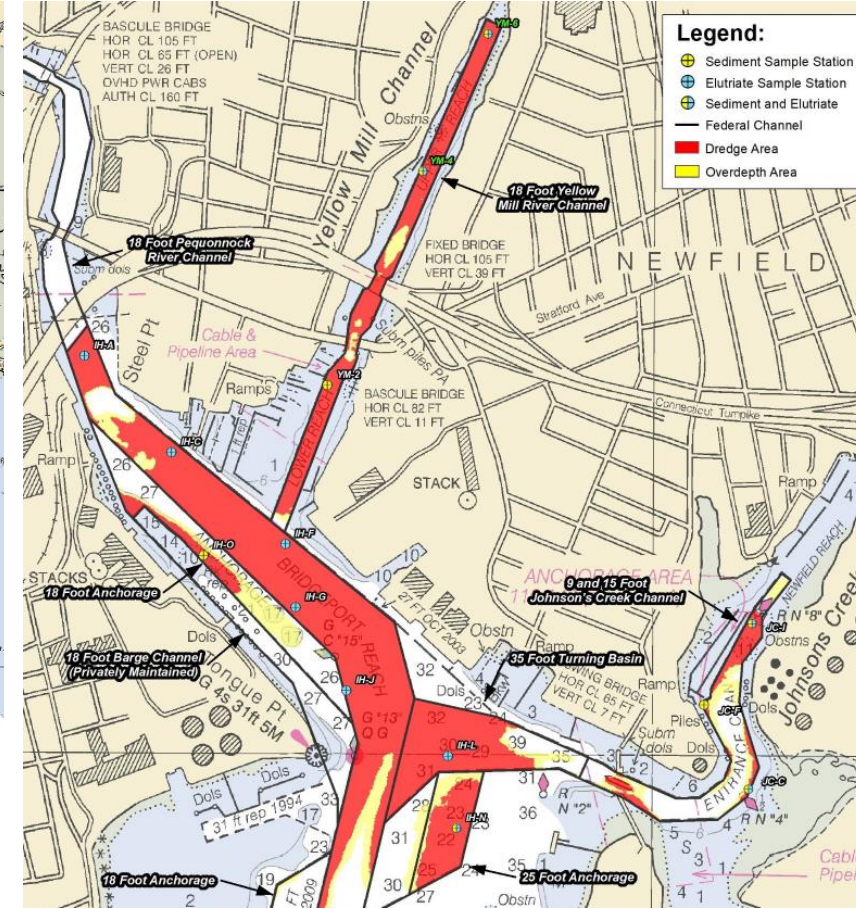
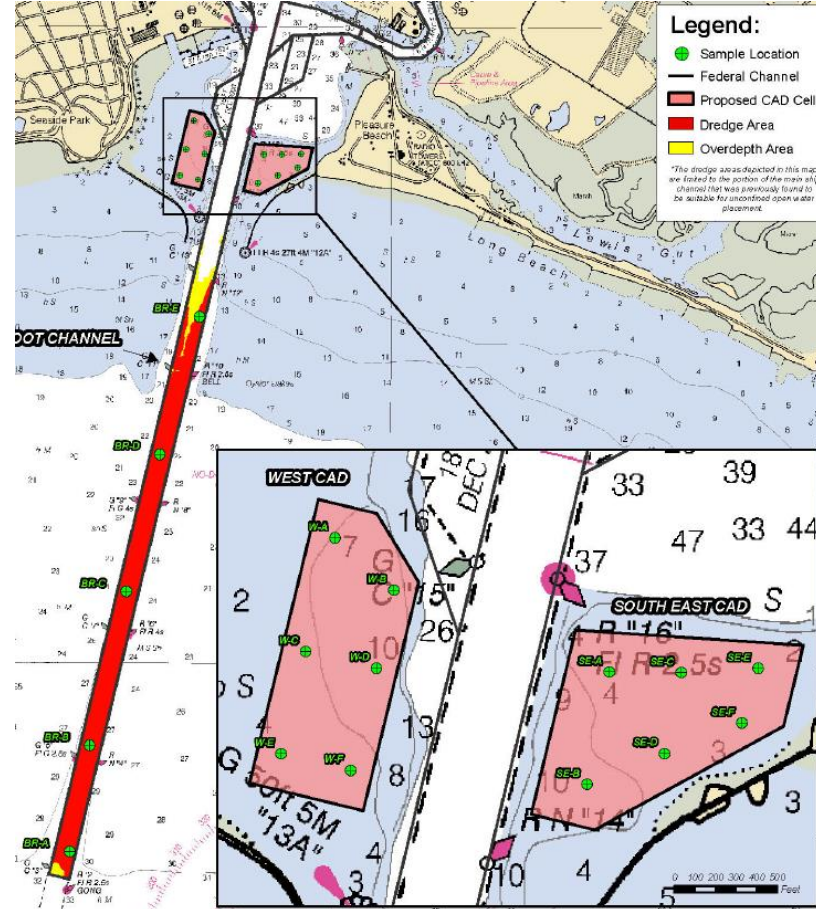


# Bridgeport and Black Rock Harbors Draft DMMP/EA

## Sediment Sampling

### Black Rock Harbor

### Bridgeport Harbor



**Sample Sites:**  
 Bridgeport FNP Entrance Channel: 5  
 Bridgeport FNP Inner Harbor: 14  
 SECAD: 6 (also 6 West CAD)



# Bridgeport and Black Rock Harbors Draft DMMP/EA

## Sediment Testing

### Suitability Determination – is the sediment suitable to place in open water?

- Physical, chemical, biological testing and modeling to determine suitability
- Determine the risk of contaminants to human health and the environment
- Follows USACE/EPA Testing Manuals

**Unsuitable material:** high concentrations of heavy metals, pesticides, petroleum-based chemicals – sediments failed toxicity and bioaccumulation tests

- Isolation required → **CAD Cells**

**Suitable material:** clean sediments, deemed non-toxic, low-risk of bioaccumulation

- Open water placement → **BHDS**



# Bridgeport and Black Rock Harbors Draft DMMP/EA Environmental Considerations

## Water Quality

- Turbidity: temporary & localized; turbidity levels from dredging are within the same range as turbidity from natural occurrences (storm events)
- Closed bucket for unsuitable material
- No overflow from scows while dredging unsuitable material
- Best management practices to minimize turbidity will be followed
- Fully comply with Connecticut State Water Quality Standards during dredging and placement.
- Coordinating with CT DEEP under the Clean Water Act.



# Bridgeport and Black Rock Harbors Draft DMMP/EA

## Environmental Considerations

### Protected Species

Not likely to adversely affect:

- Atlantic sturgeon
- Shortnose sturgeon
- Green sea turtle
- Loggerhead sea turtle
- Kemp's ridley sea turtle
- Leatherback sea turtle

No Effect:

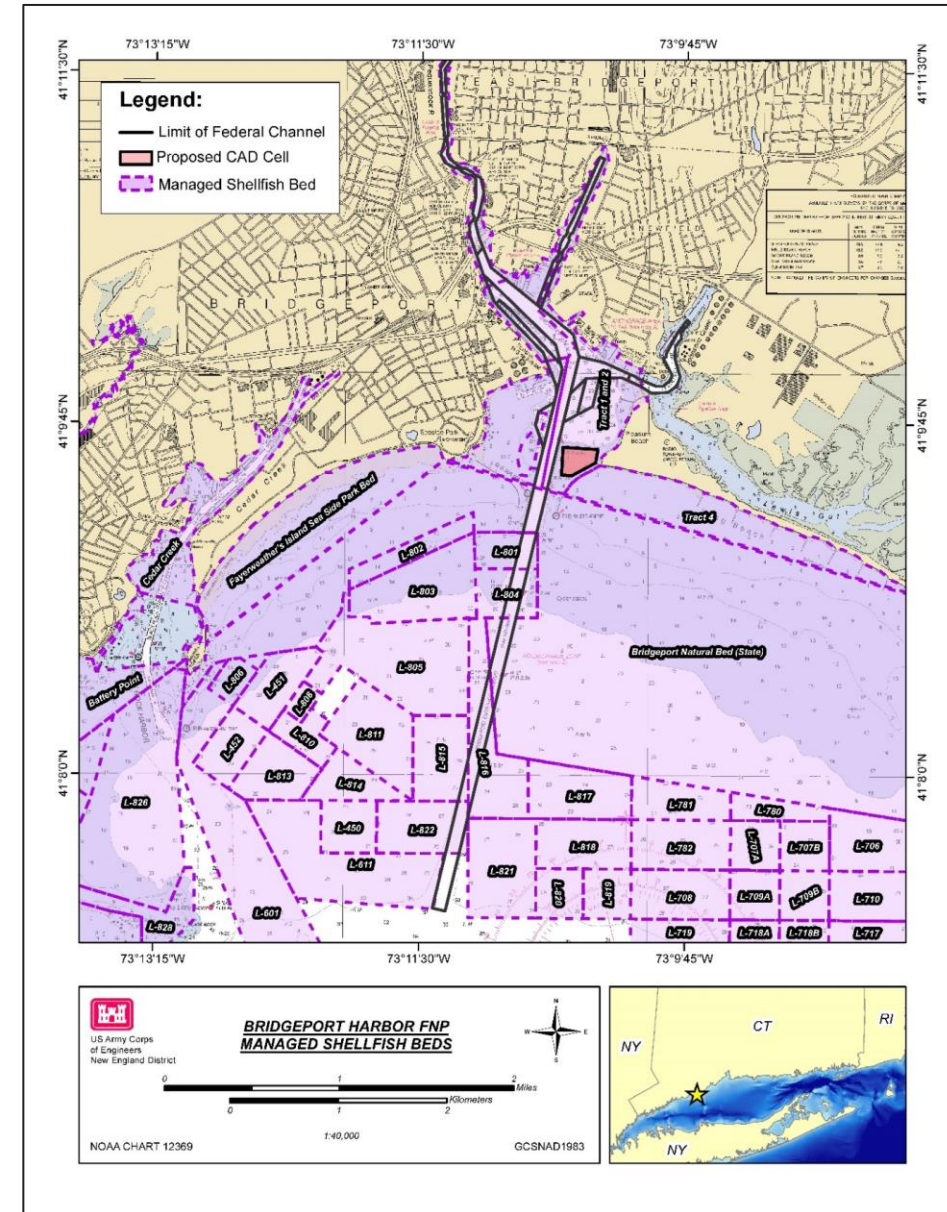
- Northern long eared bat
- Tri-colored bat
- Roseate tern
- Rufa red knot
- Monarch butterfly

### Benthic Resources

Shellfish:

- Lease areas
- Oyster habitat and restoration sites: Bridgeport outer harbor, Black Rock Ash Creek

Benthic invertebrates: expected to recover within 18-36 months





# Bridgeport & Black Rock Harbors Draft DMMP/EA Actions to Avoid/Minimize Impacts:



**TOY Work Window: October – March (Jan 31 for areas < 5m)**

## **NO DREDGING:**

- **April 1 to June 30:** to avoid potential impact to diadromous fish migration.
- **June 1 to September 30:** to avoid potential impacts to nearby shellfish beds.
- **February 1 to May 31 (areas shallower than five meters (16.5 feet):** to avoid potential impacts to spawning winter flounder essential fish habitat – Yellow Mill Channel and upper Johnsons Creek in Bridgeport Harbor, and the Black Rock Channel.

## **Other Considerations:**

- Dredge unsuitable material from the harbor channels using a **closed mechanical bucket** dredge to minimize turbidity. No overflow from the scows will be allowed.
- **Restrict speed** for vessels transiting between the dredge sites and BHDS to 10 knots or less, to minimize potential adverse impacts to transiting marine mammals and sea turtles.



# NEXT STEPS



# Bridgeport and Black Rock Harbors Draft DMMP/EA



## Next Steps

- ❖ NAE prepares the Final Report including revisions from:
  - ❖ Public Comments
  - ❖ USACE Internal Reviews
- ❖ NAE provides NAD Final Report for final USACE Reviews
- ❖ NAE makes final revisions per final USACE Reviews
- ❖ Cost Certification, Legal Certification, and Approval



# QUESTIONS

Please email your questions to [nae-  
bridgeport-harbor-dredging@usace.army.mil](mailto:nae-bridgeport-harbor-dredging@usace.army.mil)